

Company Profile



Contents

• Introduction	3
• About Us	4
• Our Values	12
• What Distinguishes?	14
• Our Services	16
• Our Partners	54
• Our Customers	58
• Our Projects	62
• Pictures Projects	76

Our Story

When **NETWORKS Beacon** first started out, it was merely paper records that were approved to achieve the unwavering goal which served as a source of strength and inspiration. It carried the banner of innovation supported by pure Saudi and Arab determination and creativity, and with Allahs help, it eventually had a huge group of governmental and non-governmental projects built on solid basis applying the most recent systems in the light current. Under the government of the Custodian of the Two Holy Mosques and his trustworthy Crown Prince, the company has achieved unprecedented success in establishing high standards in this field, following the vision of the Kingdom of Saudi Arabia 2030.

This is our story of unwavering resolve and limitless technological capabilities. There is more to be revealed and inscribed in gold letters.





Who We Are ?

From Jeddah, our journey began more than 12 years ago, driven by a constant passion for excellence and leadership in integrated solutions for light current systems, so the idea came to establish **NETWORKS Beacon** in 2012, a company with a Saudi identity, a brand that reflects integrity and credibility in light of an unstable and unbalanced market for light current systems services and despite of challenges facing both the region and the whole world. From this point, the company's ambition and success began to form an insightful and forward-looking vision for how it would expand and grow in light current systems in line with its targets and the variety of services it offers, renewing to itself a pledge whose base is commitment and respect and whose extension is development and innovation, taking upon itself the responsibility of improving both Saudi society and the Arab world. Since its establishment, **NETWORKS Beacon** has operated under the motto "safety first" and adopted the principle of providing and implementing the most recent licensed light current systems that meet international quality standards and European industry principles. As a reputable company offering integrated solutions for light current systems, it has become the top choice following its remarkable achievement in fully implementing light current systems and surpassing the project completion rate to reach 100%. The services provided by the company include structured cabling and local networking solutions, telephone exchange solutions, security camera systems, central



clocks, radio and internal calling systems, customer queues and queues management system, and many systems that will be listed later.

NETWORKS Beacon depends on its experienced human cadres of engineers and technicians equipped with the newest technologies to deliver their services, in addition to the training sessions that it provides periodically to advance knowledge and experience. Another distinctive advantage of the company is the presence of a good stock of available goods, which helps it stay ahead of the competition and obtain a prominent position in the market by providing unparalleled services.

NETWORKS Beacon prioritizes its customers above all else. It works closely with business leadership and technology specialists to provide customers with appropriate solutions, carefully plan projects before implementing them, and understands their needs and fulfills all of its obligations to them. This ensures the highest quality work is completed on schedule and that the project achieves the highest level of customer confidence. The company offers its clients year-round and round-the-clock technical support services considering the significance and sensitivity of light current systems and their connection to the safety of individuals and property, this is accomplished by a qualified work team that uses the newest measuring and testing equipment to work under pressure with the utmost expertise.

The future of the Kingdom is bright and promising, and our beloved nation deserves more than it has achieved. Therefore, we look forward to a brighter future that we are able to create with our vast wealth of experience and our exceptional talents, which we are working to double its role and increase its contribution to creating this future.



Our
Vision



Empowering the Kingdom's Vision 2030, which was launched by the Custodian of the Two Holy Mosques, King Salman bin Abdulaziz, and whose plans were drawn up by Crown Prince Mohammed bin Salman, so that we can move our country to a more advanced qualitative leap, and to draw bold features for a brighter future in accordance with what the rapid changes in the Saudi market impose on us. This vision will be achieved in a desired goal framework and steady steps that take us to the top and give us competitive values in an unconventional market.

At **NETWORKS Beacon**, we strive to offer comprehensive technical solutions in light current systems at the hands of ambitious youth who work to improve technology to future horizons and work on continuous development in various aspects. These solutions offer the highest levels of safety and control to satisfy the demands of all clients and sectors.




Consolidating the infrastructure bases for light current systems and providing the best technological solutions through optimal employment of skills, in addition to adopting development initiatives and adhering to professional ethics to achieve the intended outcome, enhance customer experiences, and create a cooperative and trustworthy environment between the two parties. All of these actions elevate the company's position and enhance its reputation locally, regionally and worldwide.

NETWORKS Beacon hopes to boost the local economy through a group of distinguished partnerships with diverse sectors, and by providing jobs suitable for the nation's youth in this field.




Our
Mission


Our Goals



The development of sophisticated electronic and software solutions to address issues with both current and non-existing security systems, as well as the creation of systems that support all capabilities capable of providing unique solutions to the Saudi and Arab markets.



To guarantee our clients receive the highest level of operational efficiency, we import the finest prominent brands in light current systems, keeping up with the technical and technological developments witnessed by the developed countries.



We work on systems that require us to deliver the greatest levels of security and safety to our valued customers, thus we provide the finest offers for system maintenance, serious warranty services, and ongoing technical support.

Our Goals

One of our goals that has been the focus of our attention and has risen to the top of our list of priorities may be ensuring that our clients receive light current system services at reasonable prices, rather than overpriced services.

Professional support by a strong technical team qualified to work under all circumstances and locations and at the highest level of professionalism. To guarantee that everything is handled properly and safely, we also offer our clients training sessions on how to utilize the services and systems that are connected to them.

Improving our beloved Kingdom by creating job opportunities for promising youth who strive with all their energies to exploit their experience and develop their capabilities in light current, in a way that strengthens the company's resources, builds its reputation, and earns its positive appreciation.



Our



Quality

Our path that we do not deviate from to gain an invaluable sustainable competitive advantage, At **NETWORKS Beacon**, we live up to our motto of achieving total quality by keeping our word .



Credibility

We engage with our clients as individuals and as an integrated work team with honesty and clarity to preserve the company's reputation and success. Ethical standards are sufficient to remove any doubt and deny any suspicion.



Teamwork

It is known that strength is in unity, and on the one hand cannot clap; Therefore, we were keen from the start to adopt a teamwork strategy to create a work environment characterized by support and stability, and based on cooperation, unity, and creativity.

Values



Harmony

It is regarded as an essential component of maintaining relationships with our valued clients, because of its effective role in building the customer's confidence and convincing him of the quality of our services. This is achieved by consistency and adherence to principles in implementing procedures and unifying goals with the customer.



Flexibility

We seize new opportunities, overcome challenges by relying on a systematic mindset, increase psychological safety, and create a harmonious work culture and adaptive leadership, using the experiences and knowledge we have built over 12 years.



Development

We have made **NETWORKS Beacon** a landmark for progress and development, as our core concern is to stay up to date with market developments in developing our systems. We also welcome the positive change resulting from praiseworthy ambitions.

Work Team

Ever since its establishment, **NETWORKS Beacon** has believed that its capital, the source of its strength, and the secret of its success lies in the human workforce that is considered the most priceless resources, and without them, the company would not exist. Every individual in the company gets the same level of attention. We trust in his abilities, flexibility, and willingness to take full responsibility. Each of them carries the spirit of one team that never gets tired within the folds of his work. Everyone is moving towards one goal, which is for the company to be characterized by flexibility and efficiency that enhances its launch towards new technical markets, promising innovative projects.

Our Motto

With determination and perseverance, we will remain steadfast, and success will surely come.

Our Philosophy

We are well aware that success depends on a myriad of challenges and that it does not come by chance. Therefore, we rely on a strategy of new thinking, meticulous analysis, and full application of the latest ideas and technologies. We also create short and long-term plans to monitor trends and deal with any issues that may arise, so that **NETWORKS Beacon** becomes more powerful in the competition arena.

What Distinguishes Us?

Customer is Our Top Priority

We will not be the best unless we gain the trust of our customers, as they are an integral part of our success. Therefore, we promise to perform our services to the highest standard, with the customer receiving 100% of what was agreed upon, without deficiency or defect. We are also committed to following up procedures' implementation step by step, from the moment of signing the initial contract till the moment of delivering the service, considering post-sale support to guarantee the best level of service.

We work to coordinate the project through organization, planning, and scheduling to take advantage of every available minute, ensuring that every stage of the project is tracked, its progress is monitored, and it is delivered on time. Time management helps us increase efficiency, achieve more projects assigned to us properly, and reach the company's goals, both on a personal and practical level.

Time Management

International Experiences with Saudi Minds

To achieve a distinctive brand and a name that is sought after by customers, we have employed a carefully selected work team that possesses unique accumulated scientific experience and deep knowledge of the market for light current systems, which is a dynamic and ever-evolving market. It was self-evident that we should be aware of all the latest developments in the business and fully understand its challenges, so that our advice and guidance would be trusted by our clients, and they can be assured that their projects are in safe hands.

Any error in light current systems is considered catastrophic and has serious financial and ethical implications. Our initial focus was on selecting the most suitable and qualified work team, which either reduces the frequency of errors or renders them unimaginable. Any follower of our company's journey over the past years will attest to our success in implementing large-scale projects, as well as our vital role in promoting and developing light current systems within the Kingdom.

Help Avoid Mistakes



Our Services

NETWORKS Beacon began and was determined to harness all its efforts and capabilities to always remain at the forefront and the most distinguished in providing services that exceed expectations. Today, it takes on challenges with confidence thanks to its expertise, innovative technologies and technical practices that enable it to meet the demands of the world's technological markets.





5G

1st

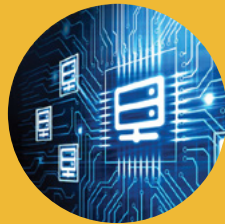
Information Technology Solutions



Effective and safe internal communication as well as customer service via chat, email, and video meetings.



Lower costs are a result of the ease with which computers linked to a local network can share and exchange files, as well as print to, access, and manage shared printers.



Boost security and protect sensitive information within the company.



Keep an eye on the activities of the employee and let him work from any location within the office.



Expand the range of devices that can be connected to the system to include phones, smart TVs, stereos, speakers, lighting, thermostats, window blinds, door locks and security cameras.



It plays an important role in cybersecurity, as it reduces the possibility of electronic attacks and unauthorized access to important data so that it is not hacked or tampered with.





System Components

- ◆ Entrance Facilities is a communications service that enters a building through a hole in the wall to connect it to devices inside the building or room.
- ◆ The equipment Room includes all servers, Core Switches, Routers, Firewall, Fiber patch panels Copper Patch Panel and network switches to connect the supply from the entrance facilities to the designated equipment.
- ◆ Backbone Cabling They are installed on channels or vertical risers and then the cables are connected to each floor.
- ◆ Telecommunication Room is a dedicated room in which local cables, patch cables and patch panels are used to connect different cables.
- ◆ Horizontal Cabling is used to transfer data and communications from devices located on premises to the nearest call center, which can be in the same building or a central network location Via fiber optic cables.
- ◆ Work Area is the final point, which connects the communications network to the user's device, Via copper cables include Cat6 Or Cat6A Or Cat7 Cables in Wired LANs, while wireless LANs include Wi-Fi technology, to transfer data among devices.
- ◆ Software includes operating systems and network management programs to monitor and maintain the network and maintain its security.



Places Of Use

COMMERCIAL BUILDINGS	OFFICES	PUBLIC FACILITIES AND GOVERNMENT INSTITUTIONS	RESIDENTIAL BUILDINGS
SCHOOLS AND UNIVERSITIES	HOSPITALS	COMMERCIAL CENTERS	FACTORIES
BANKS	AIRPORTS	SECURITY CENTERS	

2nd

Telephone Solutions



Support group and video calls service. To evaluate the efficiency of staff members and their interactions with customers and enhance their performance, keep thorough records and reports on phone calls.



Increase sales by ensuring that the customer is accurately directed to the correct department automatically during the purchasing process.



Improving the quality of customer service thanks to the speed of communication between the customer and the company by transferring the call to other lines, automatically responding by voice mail, or placing incoming calls on a regular queue, which reduces the possibility of unanswered calls.



Increasing productivity and decreasing errors as a result of better staff communication within the company.



Enabling employees to complete their tasks remotely without the need for physical presence in the office.



Save costs involved with purchasing and maintaining hardware, as the system is controlled online. There is no need for additional devices as the company or institution grows, due to the ease of adding or removing users and extensions to their phone lines as needed.





System Components

- ◆ Servers & Gateway for managing call management applications, databases, and analysis tools.
- ◆ Extensions to determine the destination of calls within the organization.
- ◆ Main Phone Lines provide communication between the system and the public telephone network.
- ◆ IP Phones for making calls, and supports features such as voicemail, conference calls, and integration with business applications.
- ◆ Programs and Software provide tools for system administration from call settings, performance reports, and user management.



Places Of Use

OFFICES

COMPANIES

HOSPITALS AND CLINICS

HOTELS

GOVERNMENTAL INSTITUTIONS

3rd

CCTV System Solutions



Preventing criminal activity and undesirable behaviors, such as stealing and vandalism, before they happen.



Provide a visual record of the events taking place. Videos and footage recorded by surveillance cameras allow events to be examined at any time, assist security authorities in investigations, and are used as evidence to detect and prevent crimes.



A feeling of security and peace of mind as a result of continuous 24-hour monitoring of those who visit the place.



Lowering insurance premiums as an extra line of protection.



The ability to follow cameras and alerts and access live or recorded videos remotely from your mobile phone or computer wherever you are.



Monitor employees. When they know they are under surveillance, they will think twice before risking robbing the place.





System Components

- ◆ Camera for photography
- ◆ Network Video Recorder Device for easy recording and storing videos on hard disks.
- ◆ Network Infrastructure to ensure communication among Cameras and Network Video Recorders.
- ◆ Uninterruptible Power supply (UPS) to maintain operation during a power outage.
- ◆ A Monitor to display live or recorded videos.



Places Of Use

HOUSES, VILLAS, AND
RESIDENTIAL COMPLEXES

OFFICES AND COMPANIES

MALLS AND TOURIST PLACES

WAREHOUSES

CAR PARKING

PHARMACIES AND SUPERMARKETS

HOTELS

CONSTRUCTION SITES

PUBLIC FACILITIES, SUCH AS TRAIN STATIONS, AIRPORTS, AND HOSPITALS

4th

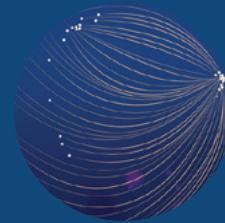
Master Clocks and Synchronized Clock Systems Solutions



Standardizing time for all hours within the organization, which helps in scheduling shifts and proper workflow



Delivering to the public and staff with the utmost precision on schedule.



At predetermined times, link and integrate the central clock system with other systems, such as security systems, HVAC systems, and school bell schedules.



It is easy to set and update the time automatically for all clocks connected to the system, set day and nighttime, and change summer and winter time.



System Components

- ◆ Master clock that is responsible for setting the time for all the secondary clocks connected to it, and it synchronizes its time with all the secondary clocks. It relies on the Global Positioning System (GPS).
- ◆ Secondary Clocks (Slave) These are the clocks that display the time in different locations of the facility and are divided into analog and digital clocks. These clocks are synchronized with the main clock of the system and their numbers vary from one institution to another.
- ◆ Network Infrastructure to ensure communication among Master Clock and Secondary Clocks (Slave), and the secondary clocks automatically adjust themselves to the correct time based on the signals they receive from the master clock.

Places Of Use

UNIVERSITIES AND SCHOOLS

TRAIN AND METRO STATIONS

HOSPITALS

AIRPORTS AND AIR TRAFFIC CONTROL

GOVERNMENT DEPARTMENTS

STOCK EXCHANGE

FACTORIES

INFORMATION TECHNOLOGY NETWORKS AND DATA CENTERS

5th

Public Address System Solutions (Sound System)



Immediate communication with everyone there without the need to raise the voice and reach each person separately.



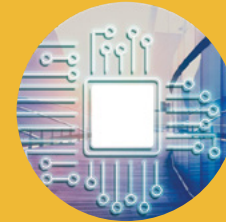
Make sure that all of your communications, whether they are about announcements or significant events, are received by all staff members promptly and in a clear, excellent manner.



When a fire or other emergency arises, alerts can be sent out fast and easily, guaranteeing that safety precautions are taken as soon as possible.



Higher security rates as a result of its smooth connection with other surveillance systems like alarms and security cameras



Without requiring human intervention or turning on microphones, the system may automatically broadcast warning signals to everyone inside the building, alerting them to the risk and instructing them to leave right away.





System Components

- ◆ Speakers are the part responsible for delivering sound and distributing it to various areas simultaneously within the system. They are either Wall Mounted Speakers installed on the walls or Ceiling Speakers installed on the ceiling.
- ◆ Controller It is used to monitor and manage the system in a complete central way. It contains software to show messages, adjust sound levels, control the areas to which messages are directed, and record and store voice messages to be broadcast later.
- ◆ Amplifiers are responsible for managing the sound in the system, as they process the sound and transmit it from the Controller to the speakers spread throughout various places within the building. The volume can also be controlled through it, and one or more speakers may be used depending on the size of the place.
- ◆ Microphone is used in this system to broadcast and send instructions or messages directly.
- ◆ Infrastructure to ensure communication among Amplifiers and Speakers to allow control of the system and modification of settings remotely, which facilitates management and maintenance.



Places Of Use

MOSQUES	SPORTS CLUBS AND STADIUMS	SCHOOLS AND UNIVERSITIES	GOVERNMENT AND PUBLIC BUILDINGS
CRUISE SHIPS	AIRPORTS	TRAIN STATIONS	ADMINISTRATIVE OFFICES AND COMPANIES
SHOPPING CENTERS	SUPERMARKET		

6th

Queue Management System Solutions



Clients will not become bored while standing in line as they will receive smooth, unique service.



Boosting income and improving the company's reputation by satisfying more customers as a result of offering superior services to more of them.



Ensuring that when periods of high pressure or increased demand, exceptional service and a high standard of quality are delivered.



Lowering traffic and crowding, which reduces employee workloads and improves service quality.



The system makes customers feel cared about and appreciated by sending reminders about their appointment, directing them to the correct location, and updating them if there are any delays via text and email.



The system provides a clear and immediate view of work performance, enabling you to quickly deal with any problems or delays before they affect workflow.



System Components

- ◆ Ticket Dispensing Kiosk is equipped with a digital touch screen to display the services provided by the institution, and the user chooses the service he wants and obtains a numbered ticket.
- ◆ Queue Information Displays Monitor the progress of the queue and know immediate information about the status of the queue and waiting times, through digital signage inside the building, or receiving direct notifications on mobile phone applications.
- ◆ Central Control Unit manages all aspects of the system, from registering customers and updating the status of queues directly, analyzing data, and managing queues and problems that may occur, which helps identify areas that need improvement and allocate resources more effectively.
- ◆ Software for queue management that allows employees to monitor and manage the queue in real time, and other software to issue tickets, manage employees, and send notifications and updates to customers.
- ◆ Network Connection Rather than utilizing direct connections to link its components, the system makes use of Internet-based technologies (IP) to transmit and receive data.

Places Of Use

BANKS

GOVERNMENTAL INSTITUTIONS

HOSPITALS AND CLINICS

MAJOR STORES AND SUPERMARKETS

CUSTOMER SERVICES

RESTAURANTS



7th

Television System Solutions (SMATV, MATV & IPTV)



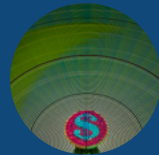
When broadcasting, the system enables channels and programs to be customized, making it easy to set up and maintain preferred channel lists. This improves the experience and increases viewer satisfaction by making it easier for them to immediately access their preferred content and satisfy their evolving demands.



Its low cost is due to the presence of one central antenna that receives satellite signals and distributes them to all rooms within the building, which makes installation costs much lower than the cost of installing individual satellite dishes for each apartment or room separately.



Regardless of the distances among the TVs in the building, the system sends the TV signal in high and equal quality to each one without degrading the signal quality.



Saving installation and maintenance costs by having one central antenna instead of installing and maintaining multiple ones for each TV.



It is easy to add new TVs to the system without the need to reinstall additional antennas due to their ability to manage signals from one central point and control channel distribution.



All connected TVs receive a strong, clear signal, regardless of their location within the building, thanks to the system's ability to boost, strengthen and distribute the signal effectively.



It provides viewers with crystal-clear images and sound without interruptions because it uses advanced technologies that ensure the signal is delivered in high and stable quality.



System Components

- ◆ Satellite Dishes works as a tool to capture and receive television broadcast signals (from satellites or from terrestrial broadcast stations) and convert them into electrical signals that can be transmitted and processed for distribution to television devices connected to the system.
- ◆ Signal amplifiers This process filters the signals and enhances the strength of the signal received from the antenna before distributing it to the rest of the building.
- ◆ Signal Distribution distributes the amplified signals.
- ◆ Receivers (Set Top Box) set the desired channel, as they convert the satellite signals of this channel into television signals that can be displayed on television devices.
- ◆ Network Infrastructure to ensure communication among System and Receivers (Set Top Box)

Places Of Use

HOTELS AND RESORTS

HOSPITALS AND HEALTHCARE
FACILITIES

OFFICES AND COMMERCIAL
BUILDINGS

RESIDENTIAL BUILDINGS

SCHOOLS AND UNIVERSITIES

TOURIST RESORTS

8th

Access Control System Solutions



Raising the level of security, especially when this system is integrated with the intrusion alarm system, fire alarm, and security cameras.



Protection against leakage or theft of vital information thanks to the system's ability to allow access to only authorized people.



It provides a detailed log that can be used to monitor activities and investigate incidents if necessary because the system records all entry and exit operations.



Control who can enter the building, with access limited to authorized individuals only.





System Components

- ◆ Server stores and manages the ID card data issued to individuals, and tracks data on who enters and when the entry process occurred.
- ◆ Credentials are considered the key to crossing the door and entering the building, as only their holder can enter, and each person has a unique card that differs from others. It may be an identification card with a magnetic stripe, or a fingerprint, eye, face, or palm.
- ◆ Reader is a device that reads credentials electronically to allow a person to enter the door, and it has different types depending on the type of credentials.
- ◆ Control Panel verifies the individuals' credentials and sends a signal to the door to open and unlock it if the credentials match.
- ◆ Door Locks open the door as soon as the signal is received from the control unit and then close the door immediately after the person enters. They have several types depending on the type of doors (electric, magnetic, wooden, aluminum, glass doors).
- ◆ Software is the controller for individuals' access. It contains the central database and file manager for the system. It records all system activities and distributes information to and from the building's control panels.



Places Of Use

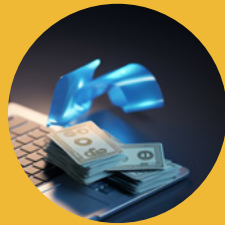
COMPANIES	BANKS	HOSPITALS	GOVERNMENT AGENCIES
FACTORIES	CINEMA COMPLEXES	RESIDENTIAL APARTMENTS	CAR PARKING
OFFICES	WAREHOUSES	RESEARCH AND DEVELOPMENT CENTERS	

9th

Uninterruptible Power System Solutions



Prevent work and service disruptions by continuing to operate during a power outage as a continuous power source with a constant supply.



Reducing the costs of repairing equipment and devices and protecting them from sudden power surges or changes in electrical current that lead to their damage.



Avoiding losses resulting from interruption of production operations.



The safety of important data that companies depend on and protecting it from loss during a power outage.





System Components

- ◆ Battery to store energy.
- ◆ Inverter to convert the energy stored in the battery into a volt suitable for the use of devices and equipment without interruption.
- ◆ Power Source It is considered a continuous source of electrical energy and prevents sudden increases or decreases in power. It switches to a secondary power source in the event of failure of the primary source, which leads to non-stop operation.



Places Of Use

OFFICES AND COMPANIES

HOSPITALS AND MEDICAL CLINICS

EDUCATIONAL INSTITUTIONS

FACTORIES

HOUSES

BANKS

HOTELS



10th

Time & Attendance System Solutions



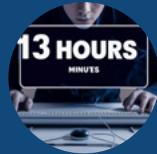
Avoid errors in payroll.



Facilitating administrative processes.



Improving the level of employee discipline and commitment.



Calculate the number of working hours spent by each employee.



Reduce the burden of preparing payroll and simplify it with easy monitoring.



Avoid tax problems as it is integrated with other systems that provide accurate data, such as human resources and accounting systems.



Reducing the time spent on administrative tasks and directing that time to implementing high-level tasks that affect the company's productivity.





System Components

- ◆ Device It may use a fingerprint, face print, palm print, or identification card (ID) to record attendance and departure.
- ◆ Software to manage the recorded data and collect and analyze it to provide reports on working hours.
- ◆ Database (Server) to store data and reports.
- ◆ Network to connect devices, programs, and servers via an Ethernet network or wireless connection to facilitate data connection.



Places Of Use

LARGE COMPANIES

GOVERNMENTAL INSTITUTIONS
AND BANKS

SCHOOLS AND UNIVERSITIES

HOSPITALS

GOVERNMENT FACILITIES

FACTORIES

11th

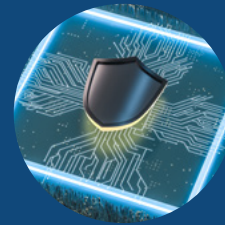
Fire Alarm System Solutions



Preventing financial losses and minimizing fire damage; this lowers the possibility of building damage and lowers the cost of repair and replacement.



Providing early notice and alerts individuals about the possibility of a fire allows them to safely and quickly leave the area.



Maintaining the safety of individuals and preventing minor incidents from growing into severe emergencies, which reduces loss of life.



Feeling safe and reassured that the property is equipped with the latest fire alarm solutions, ensuring rapid response and effective fire control.



System Components

- ◆ Control Panel is the center of the system. It monitors and controls the system's startup devices, activates detection or alarm devices, and verifies the system's status, so you can detect problems when they occur.
- ◆ Sensors/Detectors are devices that detect the presence of signs of potential fire such as smoke, heat, gas, or flame. These devices turn on automatically when they detect signs of fire, sending alerts to the alarm system.
- ◆ Notification Devices Their role is to notify all occupants of the building when a fire is detected or an emergency occurs, by issuing distinctive loud sounds and sirens or bright light signals.
- ◆ Power Supply Unit continuously provides the necessary power to all parts of the system to always be prepared to detect and report any potential fires, even in the event of a power outage.

Places Of Use

APARTMENTS AND HOUSES

OFFICES AND COMPANIES

HOSPITALS

SCHOOLS AND UNIVERSITIES

HOTELS

FACTORIES AND WAREHOUSES

MALLS AND COMMERCIAL CENTERS



12th

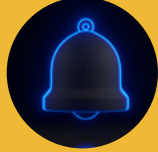
Intercom System Solutions



Verifying visitors' identity before allowing them to enter the building to prevent theft and break-ins.



Achieving an advanced level of security, as systems supporting cameras allow for additional visual surveillance; This enhances the ability to monitor and follow up activities more accurately and ensure the security of entrances.



It provides convenience as visitors do not need to knock on the door or ring the bell



Ease of communication among individuals inside great buildings, regardless of where they are in the building.



Rapid communication within the building or among different buildings for individuals who suffer from mobility problems.



Integration of the intercom system with electric lock systems allows doors to be opened remotely after verifying the visitor.



Increase the value of the property as properties that contain advanced security systems are considered safer; This makes it attractive to buyers and renters who care about their personal security.



System Components

- ◆ Outdoor Units that include a microphone, speaker, and sometimes a camera (in visual systems), and are placed at the entrances of buildings or house gates.
- ◆ Indoor Units audio or visual receivers placed inside buildings or rooms.
- ◆ Control Panel to manage communications between internal and external units, and is integrated with other systems, such as electric locks or surveillance cameras.
- ◆ Cables and Wires connect indoor and outdoor units to the control system.
- ◆ Electric Lock System Allows doors to be opened remotely.
- ◆ Modern Systems include software to manage the system, record calls, and save camera videos

Places Of Use

RESIDENTIAL BUILDINGS

OFFICES AND COMPANIES

SCHOOLS AND UNIVERSITIES

HOSPITALS

HOTELS

FACTORIES AND INDUSTRIAL FACILITIES



13th

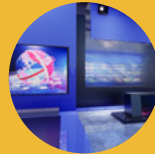
Audio Visual System Solutions



Improving workflow and meeting all of the organization's needs by sending high-quality images and videos that provide up-to-date information and accurate data to team members in record time making it easier to make informative and effective decisions.



Using video technology for conferences and meetings that offers crystal-clear audio and precise visuals improves customer and employee cooperation and enables participants in different locations to communicate effectively without having to move.



It provides a distinct entertainment experience, whether indoors or outdoors, by integrating large display devices and advanced speakers. Inside, the living room turns into an integrated cinematic experience for watching movies and listening to music, while in the outdoor garden the system enhances enjoyable times during barbecue parties and sitting sessions. Family.



Displaying information and services to visitors and customers in the reception areas of banks, airports, and stations, thus enabling them to quickly access their services.

Broadcast international and local sports matches and events on large screens to attract fans.



Effective interpretation and voting on significant decisions are made possible by audio systems, which improves communication and guarantees effective involvement from all parties concerned.



Creating a dynamic learning environment when the educational content is presented clearly and the teacher's voice is heard clearly, which leads to increased participation and interaction of students, increasing their understanding of the academic material.



Displaying new or special products on screens at the main points of sale and providing additional information about the offers.

Improving the training and learning experience by providing educational and training content in an interactive manner.





System Components

- ◆ Outputs:
 - Speakers
 - Pull-down screens or touch screens
 - LCD projectors
- ◆ Input:
 - Microphones.
 - Cameras.
 - Computers and presentation adapt.ers.
- ◆ Media Players Such as DVD Players .
- ◆ Control System.
- ◆ Ethernet Cable for Connection to the Local Network.



Places Of Use

HOUSES AND VILLAS

MEETING ROOMS IN OFFICES
AND COMPANIES

CLASSROOMS AND LABORATORIES
OF SCHOOLS AND UNIVERSITIES

EDUCATIONAL AND TRAINING
CENTERS

RESTAURANTS AND CAFES

SUPERMARKET

AIRPORTS AND STATIONS

14th

Interactive Classroom System Solutions



Attracting students' interest and love of education, by displaying educational content in a visually attractive and more interactive way, such as videos and illustrations.



Understanding difficult parts of academic subjects and simplifying more complex concepts, due to the integration of videos, images and virtual reality simulations, which helps students retain information faster.



Make learning more fun by motivating students to participate and interact with the teacher.



Encourages students to work together in the classroom by asking questions and building collaborations with each other.



Adapting educational content to improve learning outcomes, this approach supports students with vision or hearing impairments by providing expanded text translations or enhanced voice clarity, ensuring personalized assistance for effective learning.



It helps students acquire essential labor market skills, such as critical thinking and technical skills.



This system opens up new horizons for students to learn and enables them to access additional online educational resources within the classroom beyond what textbooks alone provide.





System Components

- ◆ Screen Display through which subjects can be shared, enabling teachers to write and draw demos directly on it using an interactive digital pen or touch, in addition to automatically recording what has been shared and taught.
- ◆ Software programs for managing educational activities, organizing lessons, and following up on the progress of students and trainees.
- ◆ Communication tools connect all computers or mobile phones in the classroom and allow communication among teachers and students.
- ◆ Ethernet cables for LAN connection.



Places Of Use

SCHOOLS AND UNIVERSITIES

LANGUAGE TRAINING
AND TEACHING CENTERS

CONFERENCE HALLS



15th

Smart Parking System Solutions



By pre-booking a parking space, wasting time and effort looking for parking can be avoided.



Enhancing parking management and effectively distributing available spaces; this reduces traffic and helps cars find parking more quickly.



Reducing overcrowding, thus avoiding traffic jams on the streets.



Increasing security by keeping an eye on parking spaces around-the-clock. This enables guards to monitor any unusual behavior coming from a specific car and follow it using cameras designed to identify license plates.





System Components

- ◆ **Sensors and Detectors** They are located throughout the parking lots to continuously monitor and detect the availability of spaces within the parking lot. They then collect occupancy data and transmit it to the control unit. These devices use either ultrasonic waves, an electromagnetic field, or infrared radiation.
- ◆ **Central Controllers** to manage data received from sensors.
- ◆ **Mobile Applications or Digital Screens** display the closest available spaces, enabling users to search for available spaces within the parking lots, reserve them in advance, and pay fees digitally.



Places Of Use

HOTELS

HOSPITALS

EVENT AND FESTIVAL VENUES

SHOPPING CENTERS

AIRPORTS

GOVERNMENT BUILDINGS

16th

Intrusion Alarm System Solutions



Preventing access to sensitive data or hacking into organizations' systems.



Intimidating the intruder and making him think that there are always people inside the property in the absence of the owners through smart lighting control.



Protecting property from theft and vandalism as when any threat or unusual activity is detected, the system sends immediate notifications to the phone or computer of the owners or security personnel; This allows immediate action to be taken.



Lowering financial losses as a result of early detection of any suspicious activity, including theft and break-in.



Increased peace of mind and ability to monitor properties remotely through mobile apps or the internet.



System Components

- ◆ Control Panel processes the signals issued by the sensors when any act is detected, activates alerts, and sends notifications to the alarm monitoring station and to your mobile device or computer.
- ◆ Alerting Device It warns of intrusion and scares away thieves and intruders by emitting loud sounds, whether bells or sirens, and flashing lights to determine the location of the alarm. It can also warn of a fire or smoke situation.
- ◆ Keypads are used to turn the system on and off by entering a password or code and adjusting various settings. It activates and deactivates some devices connected to the security alarm system.
- ◆ Sensors are devices that detect intrusion through the occurrence of any unusual act and entry of a person, and search for sounds and vibrations, such as hearing the sound of breaking glass, or the operation of any other device. They also detect possible intrusions when opening and closing windows or glass doors.

Places Of Use

HOUSES AND VILLAS

COMPANIES AND OFFICES

SHOPS

GOVERNMENTAL INSTITUTIONS
AND BANKS

WAREHOUSES AND FACTORIES



17th

Video Wall Display System Solutions



Providing huge images and very detailed scenes thanks to the integration of its high-resolution screens.



Allow displayed content to be automatically updated using advanced digital content management tools, which provide regular updates and a flexible schedule; This facilitates the process of customizing and modifying content without the need for frequent manual intervention.



Video walls attract attention and focus with the content being displayed.



It requires much less maintenance thanks to the use of long-lasting, highly efficient LED lighting.



It is one of the most effective advertising tools, thanks to its large size, it quickly attracts customers' attention, thus delivering the marketing message to your audience better.



Easy to use for designing and displaying content thanks to software interfaces and tools that can easily customize and organize content to suit your needs.



It contributes to increasing brand awareness through the advanced visual content it provides.

50



System Benefits

System Components

- ◆ Processor allows control over the content that is displayed on the video wall, when and where it appears, and how it will finally be displayed.
- ◆ Control Systems distribute content across screens and coordinate input data from different sources to ensure that the image is displayed in high resolution.
- ◆ Video Wall Displays form the large surface of the video wall, and different types such as LCD, LED, and OLED are used to provide various levels of brightness and accuracy. These screens work together to display the image in an integrated manner, so it requires careful coordination for smooth and efficient viewing.
- ◆ Software to manage content and create attractive offers.

Places Of Use

CONFERENCES, EVENTS
AND EXHIBITIONS

MALLS AND COMMERCIAL CENTERS

AIRPORTS

MAJOR COMPANIES

UNIVERSITIES AND SCHOOLS

18th

Nurse Call System Solutions



Rapid response to any emergency to reduce the possibility of health complications.



An effective way to protect the patient and ensure his treatment as quickly as possible.



The patient receives a higher level of health care.



The system facilitates immediate communication between nurses and doctors, thus reducing the effort required and time wasted for constant monitoring of patients.



The patient feels safe that the help he needs will reach him when he requests it





System Components

- ◆ Room Stations are located near the patient's bed. When the patient presses the button, he can call the nurse to request help.
- ◆ Master Station is installed at the reception containing a telephone handset with an LCD screen and a central control unit that allows nurses to answer patients, check the status of calls, and know room numbers.
- ◆ Dome Lights in front of each room help the nurse know the room and reach it faster.
- ◆ Duty and Staff Stations are located in the corridors so nurses can know what to call them.
- ◆ Wires and Cables are responsible for sending signals among the call buttons, control panel and communication devices.



Places Of Use

HOSPITALS

HEALTH CARE CENTERS

PHYSIOTHERAPY CENTERS

ELDERLY CARE FACILITIES

SPECIAL NEEDS PATIENT
CARE FACILITIES

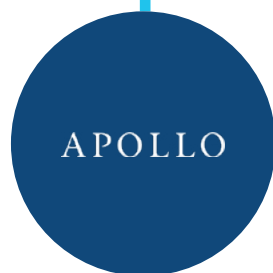


**Our
Partners**











Our

Customers







Human Resources and
Social Development

وزارة الشؤون الإسلامية والدعوة والإرشاد
Ministry of Islamic Affairs, Dawah and Guidance



وزارة الدفاع
MINISTRY OF DEFENSE



وزارة الداخلية

المملكة العربية السعودية



وزارة الصحة
Ministry of Health



وزارة الرياضة
Ministry of Sport



وزارة التعليم
Ministry of Education

وزارة المالية
Ministry of Finance



أمانة منطقة الرياض
RIYADH REGION MUNICIPALITY



وزارة النقل والخدمات اللوجستية
Ministry of Transport and Logistic Services



وزارة التجارة
Ministry of Commerce



وزارة السياحة
Ministry of Tourism



المؤسسة العامة لجسر الملك فهد
King Fahd Causeway Authority



هيئة الزكاة والضريبة والجمارك
Zakat, Tax and Customs Authority



الهيئة الملكية
للجبايل وينبع
Royal Commission for Jubail & Yanbu



هيئة الرقابة ومكافحة الفساد
Oversight and Anti-Corruption Authority



مدن MODON
الهيئة السعودية للمدن الصناعية ومناطق التقنية
Saudi Authority for Industrial Cities and Technology Zones



الديوان العام للمحاسبة
General Court of Audit



وزارة الثقافة
Ministry of Culture



الهيئة السعودية للمياه
Saudi Water Authority





Our
Projects





1

- Comprehensive rehabilitation center project, Ubaidah.
- Social Security Office Project, Yanbu.
- Social Observation House Project, Yanbu.
- Social Observation House Project, Jeddah.
- Social Development Center Project, Dalam.
- Social Development Center Project, Hail.
- Social Education House Project for Girls, Asir Region.
- Comprehensive rehabilitation center project, Yanbu.
- Social Security Project, Riyadh.
- Social Development Center Project, Turba.
- Social Security Office Project, Habana.
- Social Security Office Project, Yama.
- Social Security Project, Al-Amway.
- Social Service Center Project, Unaisah.
- Comprehensive rehabilitation center project for females, Riyadh.
- Social Education House Project for Boys, Riyadh.
- Social Education House Project for Girls, Abha.



- Regional Laboratory, Blood Bank and Poison Center Project, Sakaka.
- 40-bed dialysis hospital project, Hail.
- 30-bed dialysis hospital project, No.
- 40-bed dialysis hospital project, Sakaka.
- Al Amal Mental Health Hospital Project, Building No. 5.
- Inventory control building project, Riyadh.
- Blood Bank Project, Hafer Al-Batin.
- A group of projects affiliated with King Faisal Specialty Hospital.



وزارة التعليم
Ministry of Education

3

- General Administration of Education in Bisha.
- Educational supervision building project in Qassim.
- Al-Manmath University, female student housing.
- King Saud bin Abdulaziz University for Health Sciences (offices, warehouse, and workshop)
- Al-Jouve University, Faculty of Education for Girls.
- Al-Jouve University, Library Building.
- Al-Jouve University, Faculty of Humanities and Administrative Sciences.
- Al-Jouve University, Faculty of Science and Arts in Qurayza
- Taibah University, (Al-Alaa Branch - Female Students).
- Imam Muhammad bin Saud Islamic University (Scientific Institute, Al Manmath).



وزارة التعليم
Ministry of Education

- Imam Muhammad bin Saud Islamic University (Scientific Institute, Zulfi).
- Imam Muhammad bin Saud Islamic University (Scientific Institute, Samath). Imam Muhammad bin Saud Islamic University (Scientific Institute, Radwa).
- Imam Muhammad bin Saud Islamic University (Scientific Institute, Rafah).
- Imam Muhammad bin Saud Islamic University (Scientific Institute, Al-Bida).
- Prince Sattam University in Al Kharj (faculties of Prince Sattam bin Abdulaziz Budi Al-Dawa sir and Al-Salil University).
- A group of projects for nurseries, kindergartens, and schools for boys and girls.



4

- King Salman Oasis for Science and Entertainment Centers Project, Exit 16.
- King Salman Oasis for Science and Entertainment Centers Project, Malaz.
- General Administration Building for implementing Secretariat projects.
- General Administration of Services Control.



وزارة الثقافة
Ministry of Culture

- Historic Subaie House, Shaqra.
- A project to prepare and restore the basic components of the urban setting of the village of experts' heritage sites.
- A project to implement restoration, rehabilitation and development works for a number of buildings in Najran.
- Prince Mohammed bin Salman's project to develop historical mosques.

5



6

- Men's Academy Project, Prince Sultan Military Medical City.
- Bone Marrow Project, Prince Sultan Military Medical City.
- Navy Housing Project, Jubail.
- Outpatient and specialized clinics project at the Armed Forces Hospital, Jizan.



- Ministry of Waqif building project, Unaisah.
- Ministry of Waqif building project, Al Manmath.
- Mosques, Da'wah and Guidance Department Building Project, Zulfi.

7

وزارة الداخلية

المملكة العربية السعودية



8

- A marine pier and integrated building project, Al Hunaiza.
- Border Guard officers' dormitories project, Al-Laith.
- Multi Story building, Security Forces Officers Club.

الهيئة السعودية للمياه Saudi Water Authority



9

- Facility security headquarters at desalination plants, southern region.
- Facility security headquarters at desalination plants, Yanbu.

هيئة الزكاة والضريبة والجمارك Zakat, Tax and Customs Authority



12

- Lecture hall, Riyadh Customs
- Modern outlet development, AL Haditha



المؤسسة العامة لجسر الملك فهد King Fahd Causeway Authority

13

- Detention and investigation building.



وزارة الرياضة
Ministry of Sport

10

- General Sports Authority project, Zulfi.
- Shield Sports Club Project, Dawadmi.
- Al-Tawau Sports Club Project, Ubaidah.
- Uhud Sports Club Project, Medina.



11

- Primary health care project at King Abdulaziz Medical City.
- Logistics and supply center project.
- Primary clinics building project in Khash Al-Aan.

وزارة المالية
Ministry of Finance



14

- Administrative building and contraband warehouse project, Jizan Port Customs.
- Living means Project, Riyadh Customs.

وزارة النقل والخدمات اللوجستية
Ministry of Transport and Logistic Services



15

- Roads management project, Daw admi.
- Laboratory project, Al Thymoma.

وزارة السياحة
Ministry of Tourism



16

وزارة التجارة
Ministry of Commerce



17

- Arar Museum

- Ministry of Commerce Building Project, Dammam.

الديوان العام للمحاسبة
General Court of Audit



18



19

- General Audit Bureau, Sakaka

- Industrial City, Ha'il.

هيئة الرقابة ومكافحة الفساد
Oversight and Anti-Corruption Authority



20

- Oversight and Anti-Corruption Authority, Medina
- Oversight and Anti-Corruption Authority, Al-Baha

الهيئة الملكية
للجبيل وينبع
Royal Commission for Jubail & Yanbu



19

- Al Mushrif School, Yanbu

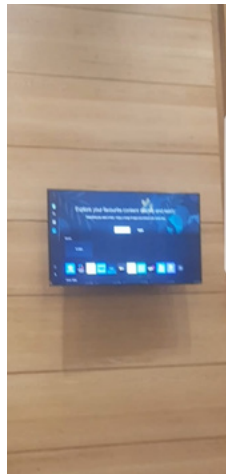
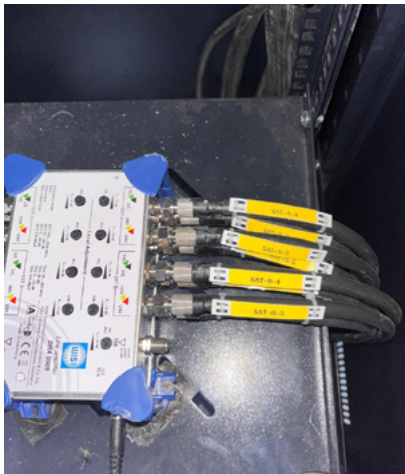


22

- Lee jam Sports Company (Fitness Time)
- National Mechanical Systems Company
- Chuck E. Cheese restaurants
- Rushen
- Commerce chamber, Al-Kharj

Pictures Projects







 www.bnetworksit.com



Riyadh branch

Omar bin Abdul Aziz Road - Al Malaz

 (+966) 114782526

 (+966) 114787667

 Riyadh@bnetworksit.com



Jeddah Head Office

Al-Haramain Road - Al-Safa

 (+966) 920005451

 (+966) 126556055

 (+966) 126126700

 Jeddah@bnetworksit.com

Contact Us